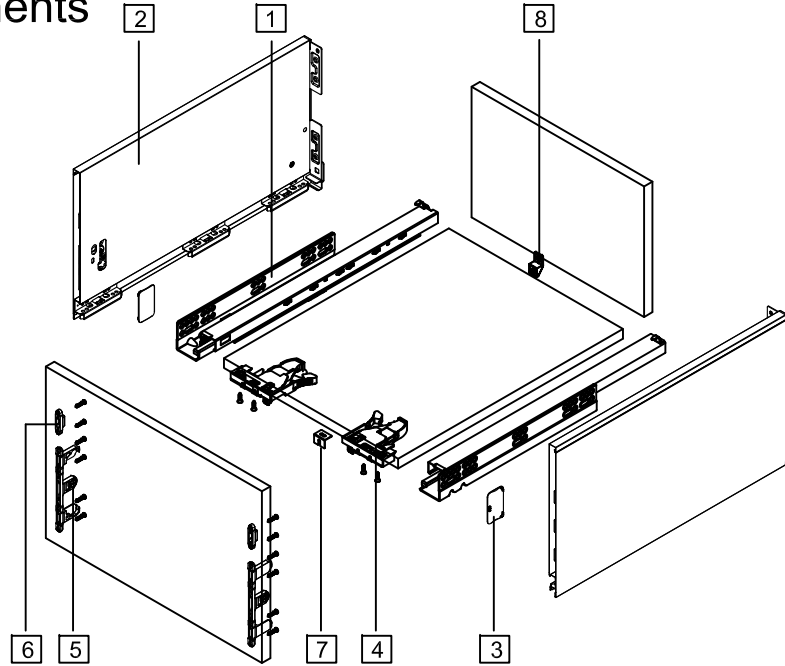




# OPTIMIZ-R DRAWER (Height 249)

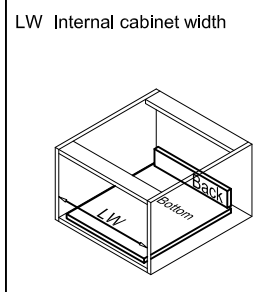
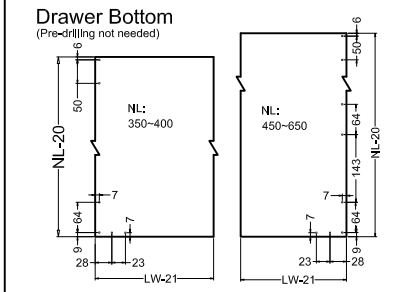
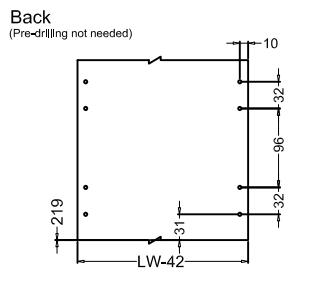
## Components



1. Series 828 slides
  2. 249 height drawer sides
  3. Side cover plate
  4. 4-way locking devices
  5. 185 Front fixing-brackets
  6. 249 Front fixing-brackets
  7. Bottom fixing - front \*
  8. Bottom fixing - back \*
- (\* Optional for wide drawers)

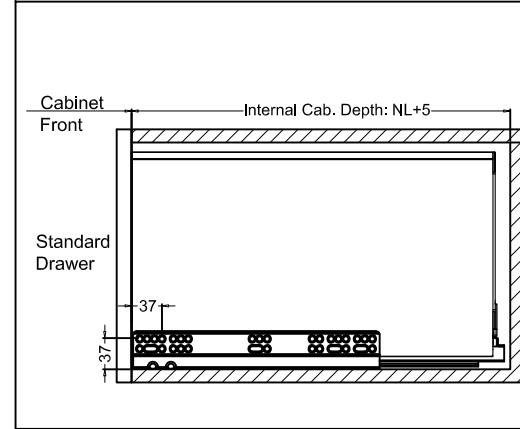
Nominal Length (NL)	Internal Drawer Depth	Min. Internal Cabinet Depth
350mm	324mm	355mm
400mm	374mm	405mm
450mm	424mm	455mm
500mm	474mm	505mm
550mm	524mm	555mm
600mm	574mm	605mm
650mm	624mm	655mm

## Drawer Back & Drawer Bottom Dimensions - 16mm panel



## Installation dimensions (mm)

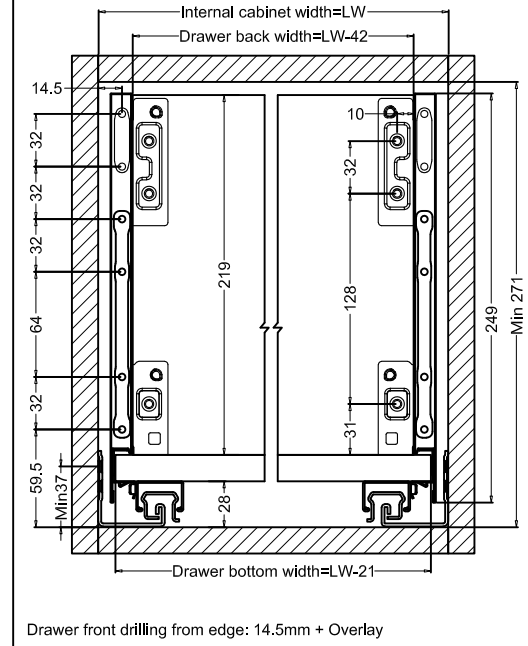
NL: Nominal Length



## Drawer installation dimensions (mm)

LW=Internal cabinet width

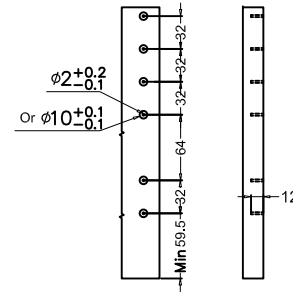
Height 249



Drawer front drilling from edge: 14.5mm + Overlay

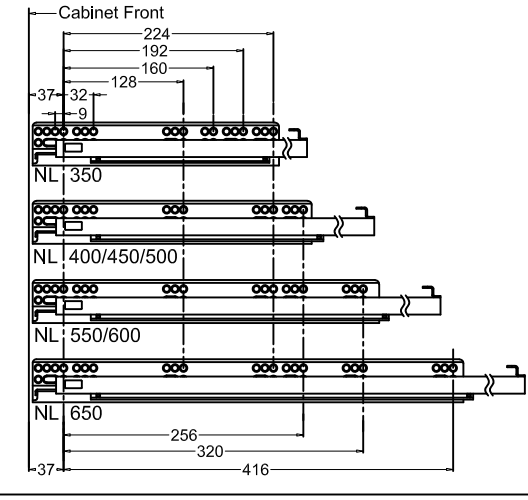
## Drawer Front Drilling (mm)

Height 249



$\phi 2 \times 12$	$\phi 10 \times 12$
Wood screw	Dowel or expanding dowel
$\uparrow \phi 4 \times 17$	$\square \phi 10$ dowel or expanding dowel

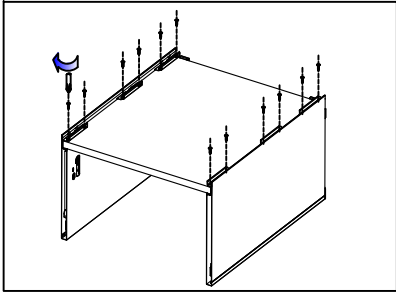
## Slides Mounting (mm)



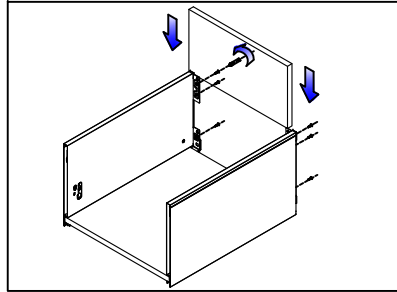


# OPTIMIZ-R DRAWER (Height 249)

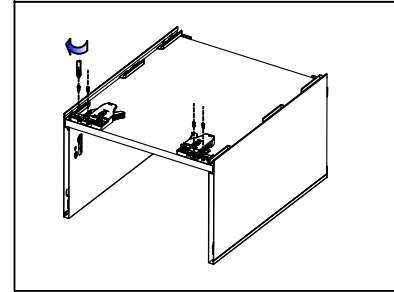
## Drawer Assembly



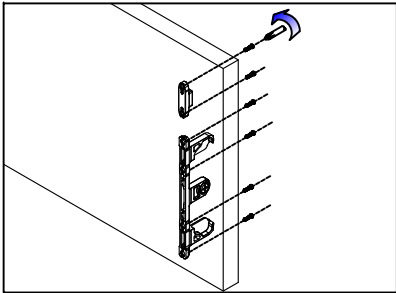
Bottom assembly



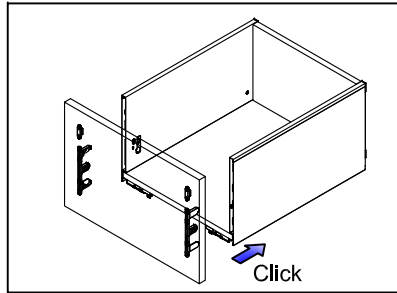
Back assembly



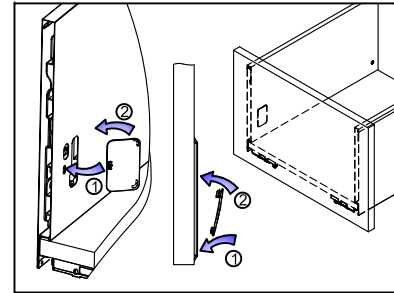
Locking Brackets assembly



Front bracket assembly

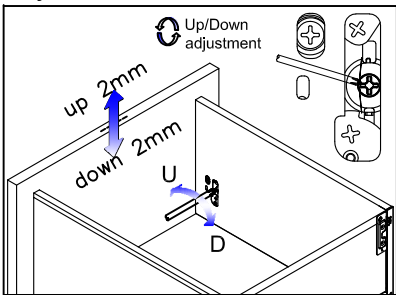


Front assembly

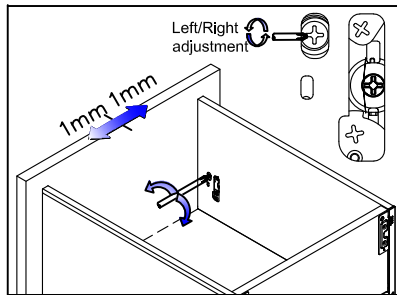


Cover Cap assembly

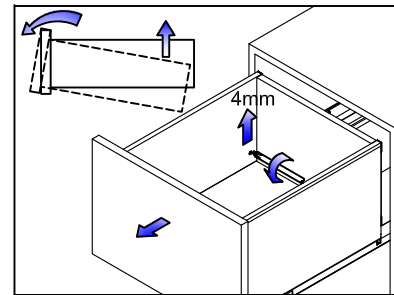
## Adjustment



Up / down adjustment

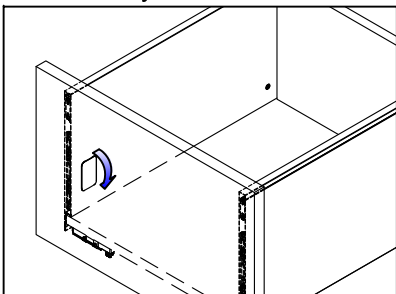


Left / right adjustment

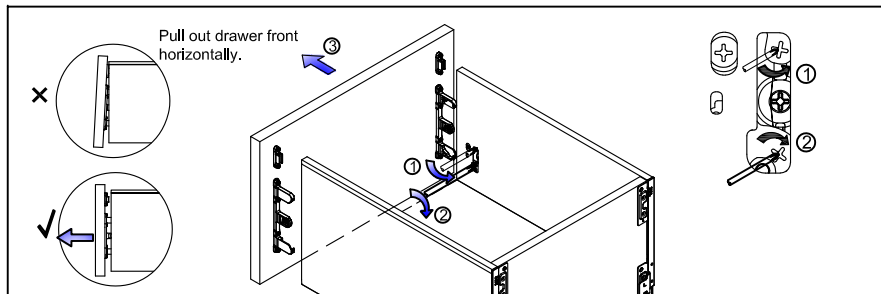


Front tilting adjustment

## Disassembly



Remove Cover Cap



Release drawer front