

Do not cut the template for use in an 18" wide cabinet opening

Cut on this line for use in a 15" wide cabinet opening

Cut on this line for use in a 12" wide cabinet opening

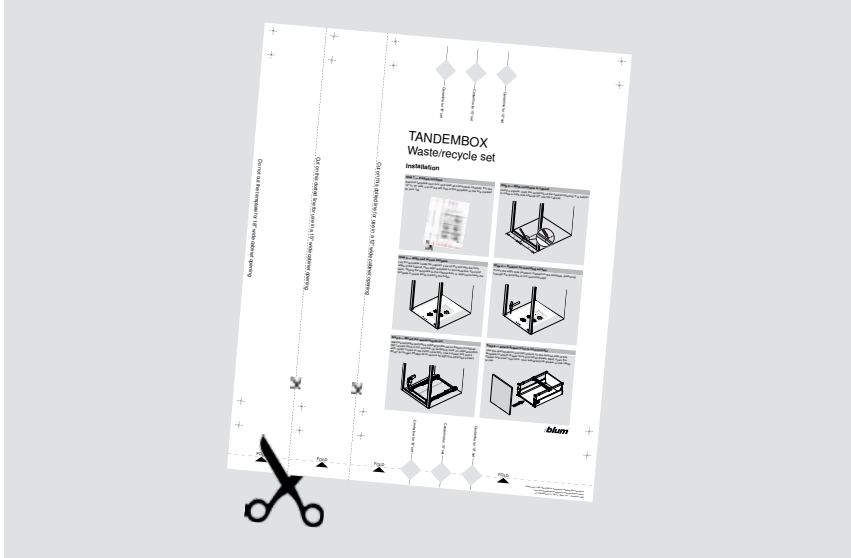
TANDEMBOX

Waste/recycle set

Installation

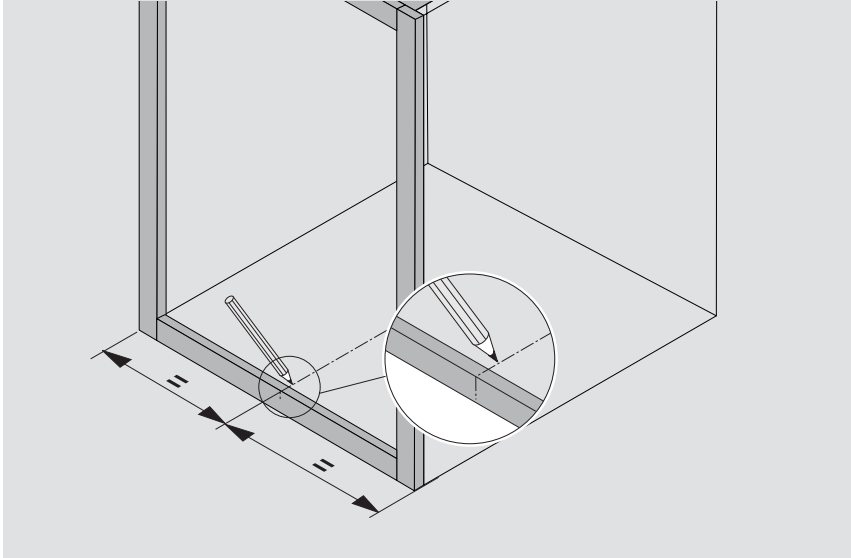
Step 1 — Prepare template

Remove template from box and read all instructions carefully. For 12" or 15" sets, cut off left side of template on the line marked for your set.



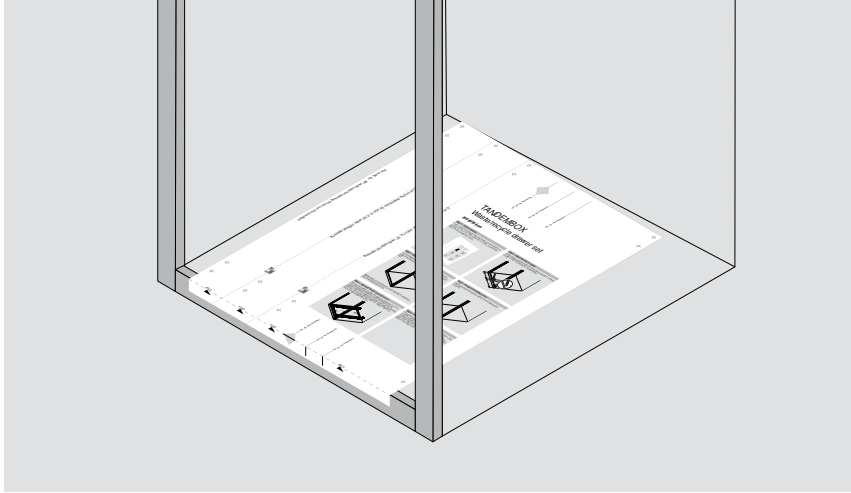
Step 2 — Mark centerline in cabinet

Using a framing square, mark centerline of cabinet opening. It is helpful to make a mark that extends 20" into cabinet.



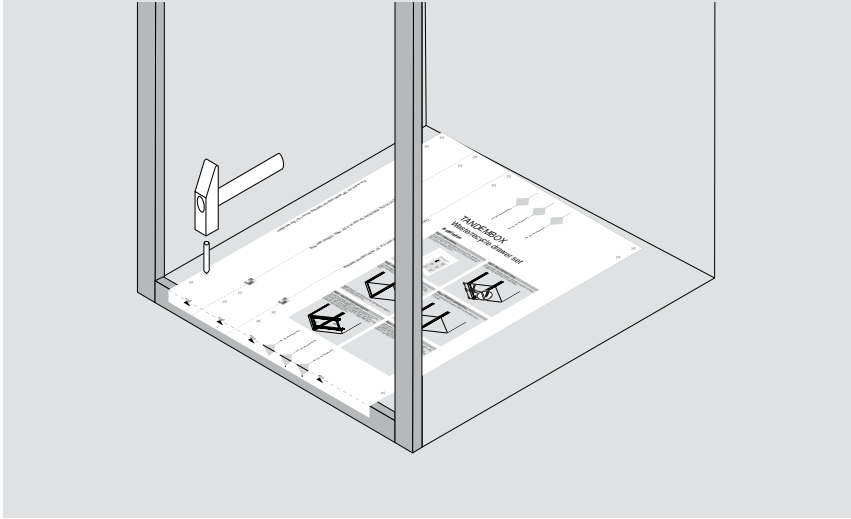
Step 3 — Align and secure template

Lay template inside cabinet. Line up fold with the front edge of the cabinet, then align template on the centerline, front and back. Taping template to the cabinet face and bottom is required to keep template in place while marking the holes.



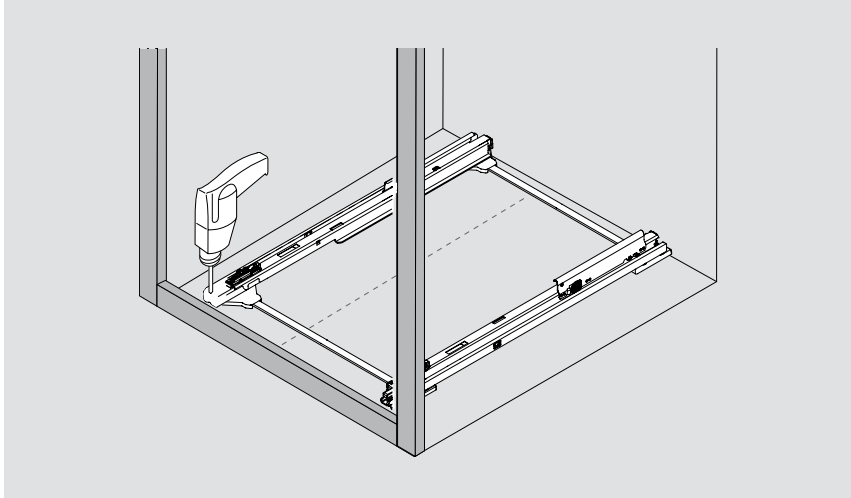
Step 4 — Mark mounting screw locations

Punch eight hole locations marked on the template, pre-boring through template is not recommended.



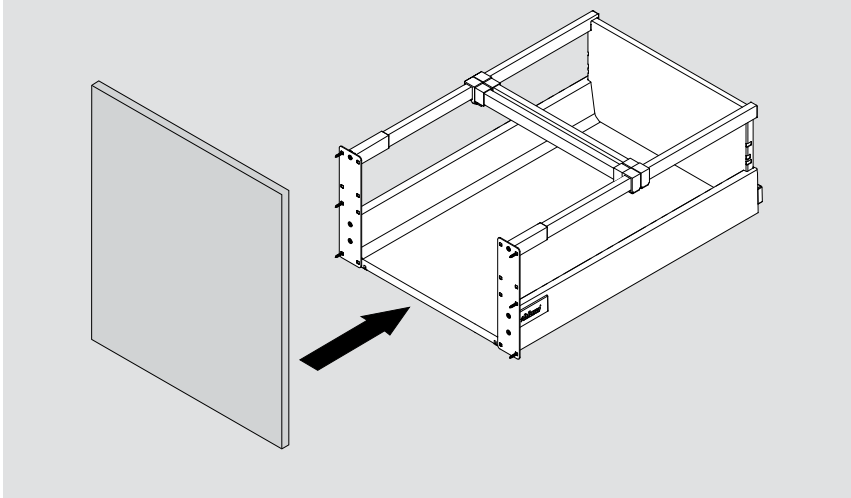
Step 5 — Mount the waste/recycle set

Remove template and place cabinet profile set on bottom of cabinet. Set runners back 4 mm and line up centerline mark on cabinet bottom with center marks on the metal crossrails. Use a power drill and a #2x2" (or longer) Phillips bit to secure all eight pre-attached screws.



Step 6 — Attach drawer front to front bracket

Use the specifications and instructions on the reverse side of this template to attach drawer front and install drawer. Next, open the drawer and insert your bins. Your waste/recycle drawer is now ready to use.



Please call 1-800-438-6788 for assistance installing Blum products.
Technical specifications subject to change without notice.
LIT.TBX5500.07.11 © 2011 Blum, Inc. Printed in USA



FOLD

FOLD

FOLD

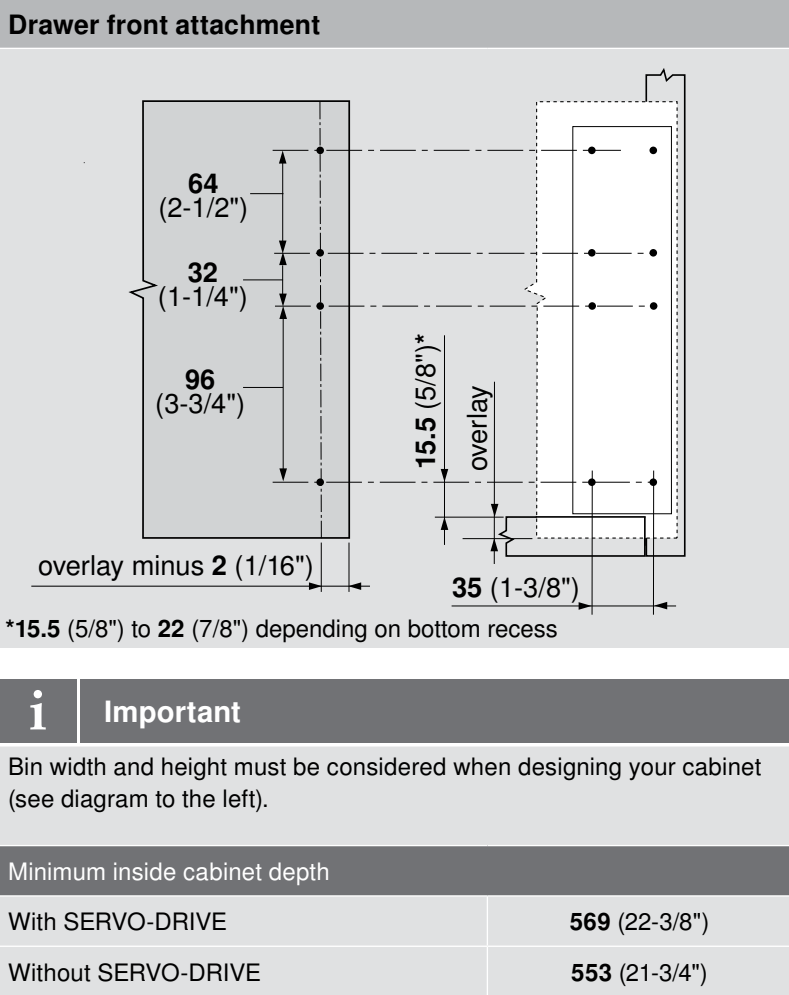
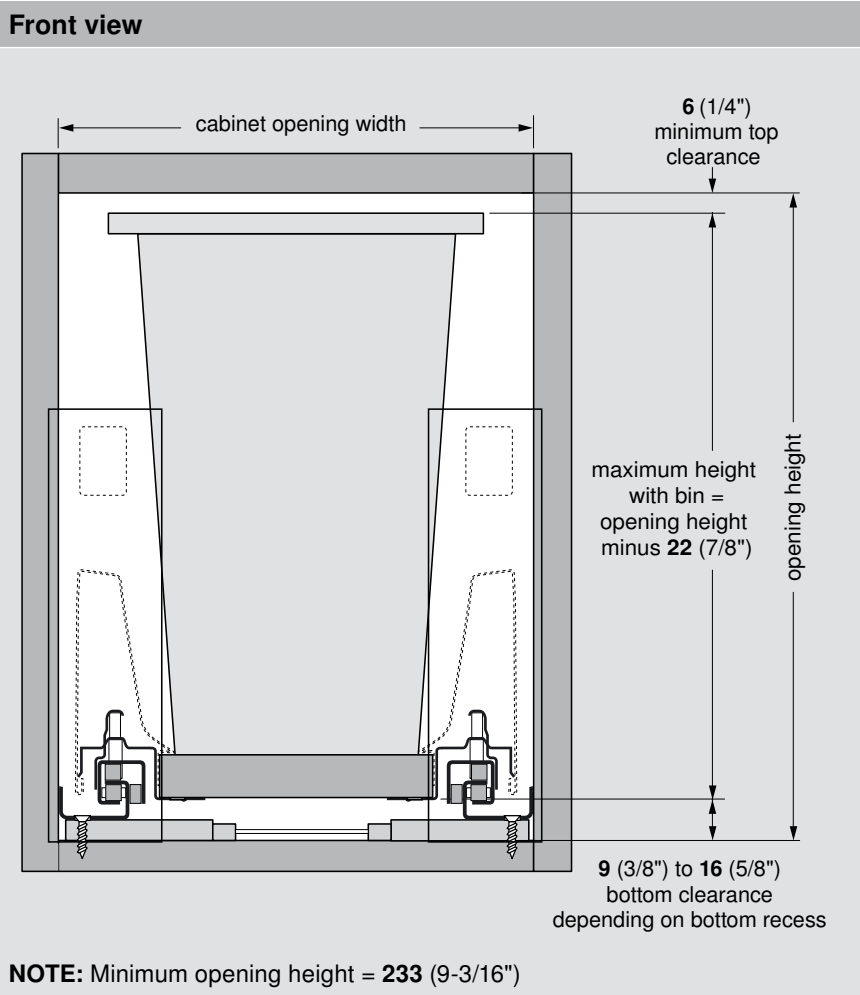
FOLD

Centerline for 18" set

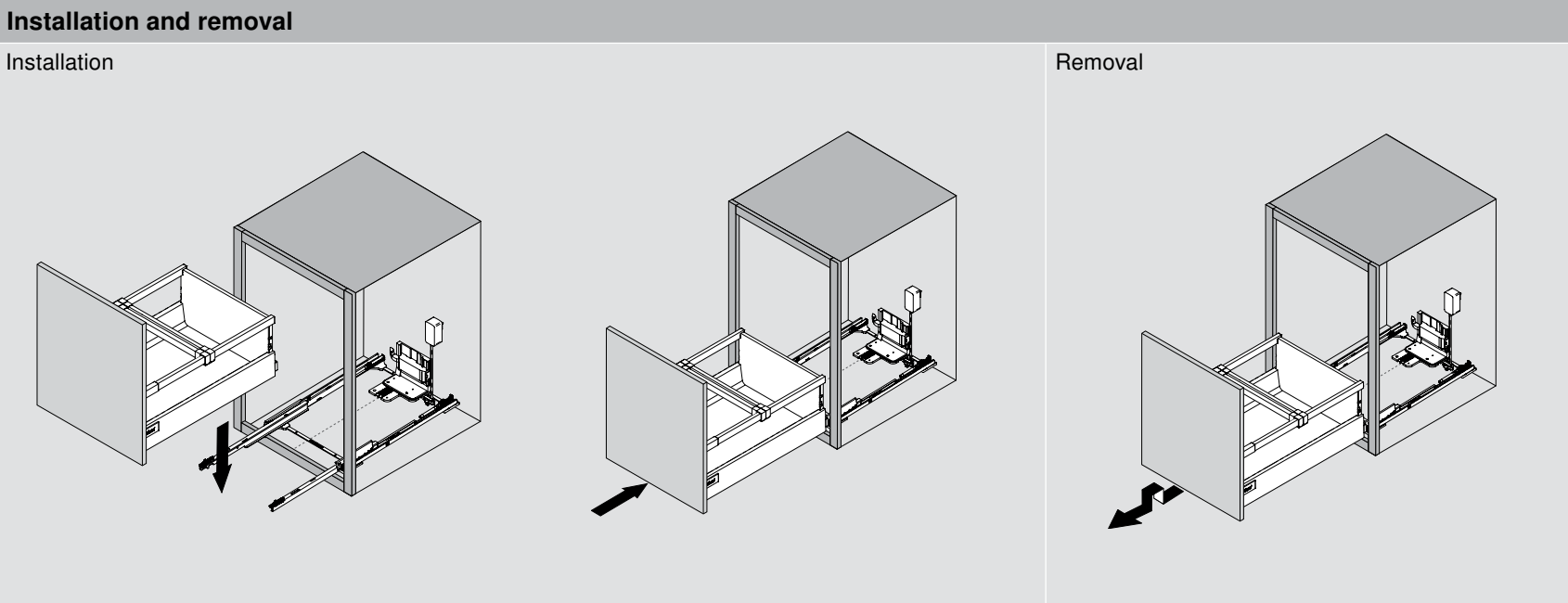
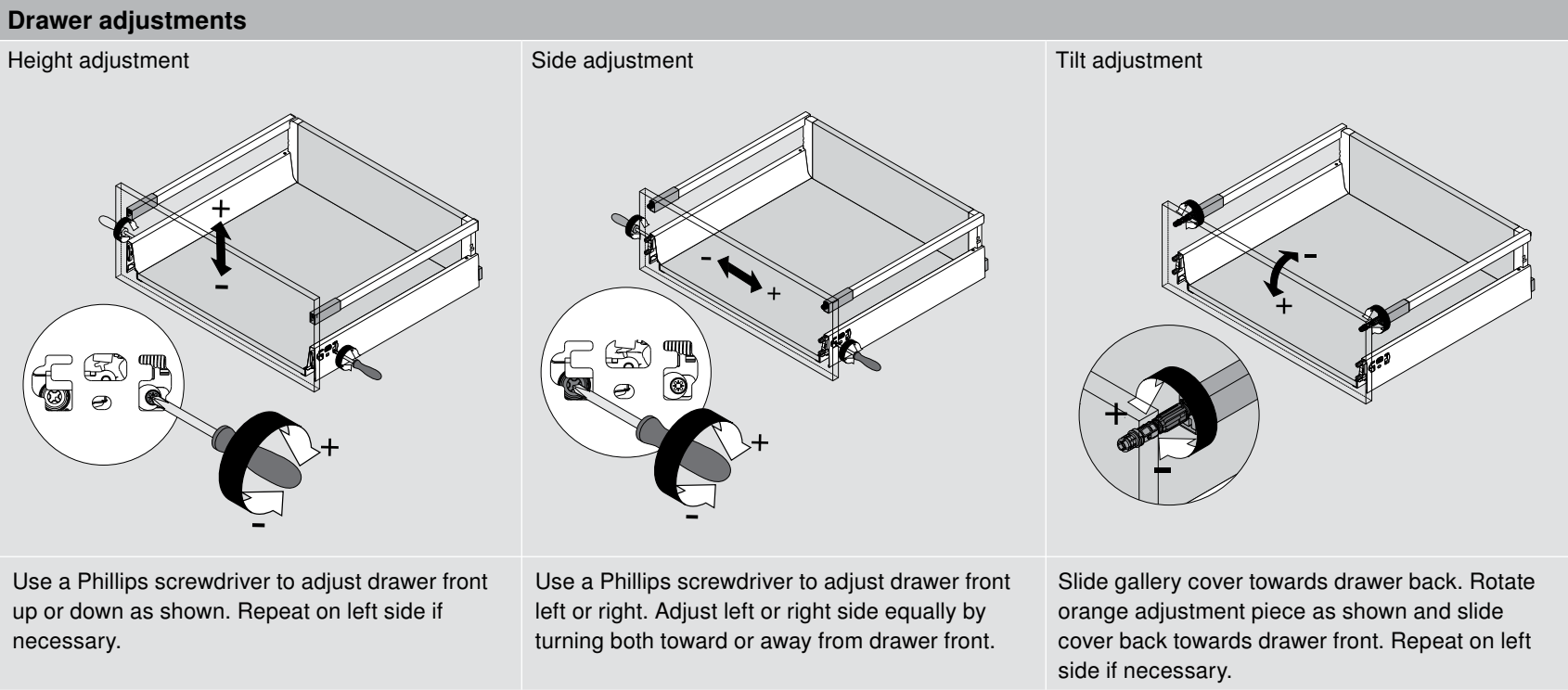
Centerline for 15" set

Centerline for 12" set

Drawer and cabinet specifications



Specification chart		
Waste/recycle set	Drawer length	Minimum cabinet opening width
356M55B7SAB	550 (21-5/8")	305 (12")
356M55B7SAD	550 (21-5/8")	381 (15")
356M55B7SAF	550 (21-5/8")	457 (18")



For more information about installing Blum products go to blum.com or call 1-800-438-6788 for customer service.
Technical specifications subject to change without notice.

